



# MONTHLY MEMBERSHIP PROGRESS REPORT

District 318 A

Results as of: 09/30/2017

GMT: N S SANKAR

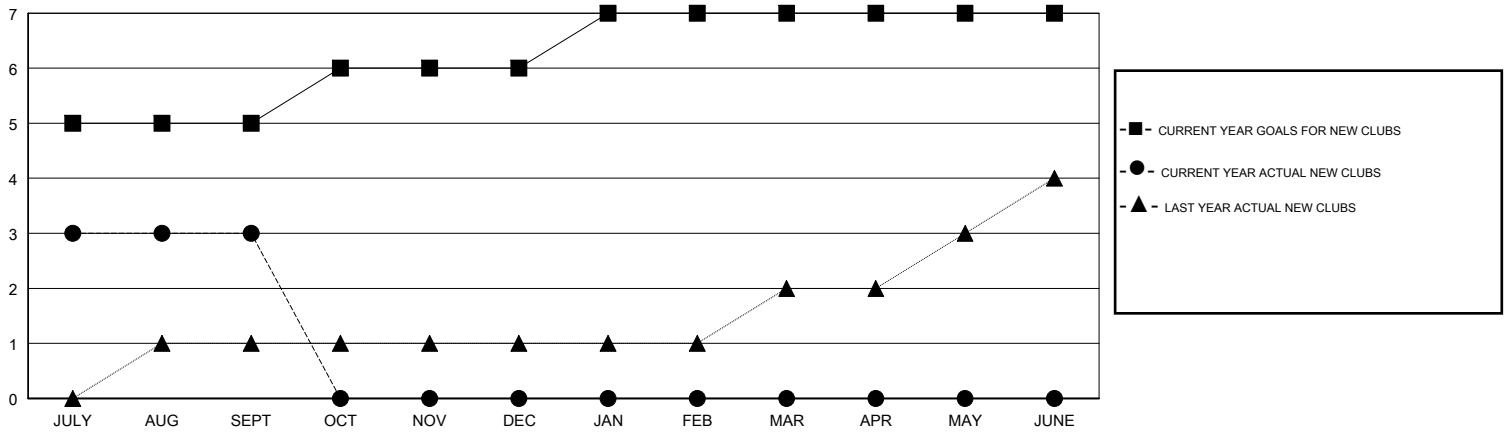
LOCATION INDIA

GMT CA

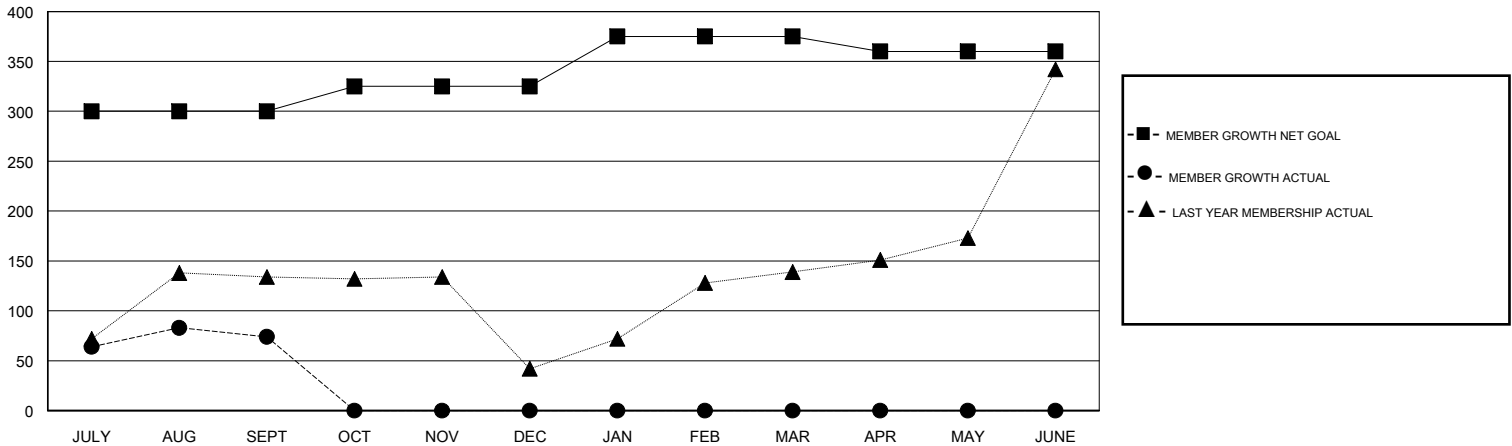
Clubs			
RESULTS FOR 2017-2018			
QUARTER	NEW CLUB GOAL	NEW CLUBS	DROPPED CLUBS
JULY/AUG/SEPT	5	3	0
OCT/NOV/DEC	1	0	0
JAN/FEB/MAR	1	0	0
APR/MAY/JUNE	0	0	0

Members			
RESULTS FOR 2017-2018			
QUARTER	MEMBER GROWTH NET GOAL	MEMBER GROWTH ACTUAL	DROPPED MEMBERS ACTUAL (including transfers)
JULY/AUG/SEPT	300	181	107
OCT/NOV/DEC	25	0	0
JAN/FEB/MAR	50	0	0
APR/MAY/JUNE	-15	0	0

GOALS AND ACTUAL NEW CLUBS CUMULATIVE



GOALS AND ACTUAL MEMBERS CUMULATIVE



DROPPED CLUBS: 0	37 CLUBS OF 117 ADDED 1 OR MORE NEW MEMBERS	<u>GENDER DISTRIBUTION</u>	
DROPPED MEMBERS		MALE	2,970 (82.73%)
DECEASED	4	FEMALE	620 (17.27%)
CLUB CANCELLED	0	Women Percentage Fiscal Year Goal: 20%	
OTHER	103	TOTAL FAMILY UNIT MEMBERS	
TOTAL	107	1,044	
<a href="#">CLICK HERE FOR CUMULATIVE MEMBERSHIP DATA</a>		FAMILY MEMBERS PAYING HALF DUES	
		539	